

SmoothShapes®

Treatments are performed by qualified medical practitioners, to meet your expectations and ensure your safety.

Results that truly speak for themselves in a few effective visits.

Before



After



Photos courtesy of Dr. Vivian Bucay

Naturally You

Full range of services available at Persona:

Rejuvenation

- Time Machine skin analysis & evaluation
- Age spots & pigmentation
- Wrinkles
- Sun aged skin
- Mature skin

Dermatology Services

- Acne scar removal
- Rosacea, redness & broken facial veins
- Spots, moles & wart removal
- Excessive Perspiration
- Minor Dermatological Surgery

Aesthetic Enhancement

- Lip, chin, cheek, nose enhancement
- Scars
- Freckles

Vein Therapy

- Spider veins
- Varicose veins

Body Contour

- Cellulite treatment
- Excess localized fat removal (Smartlipo)
- Stretch marks

Weight Management

- Weight loss, nutrition & exercise benefits
- Post-natal

Hair Removal

- Unwanted hair removal
- Ingrown hair removal

T / +356 21 340 366
F / +356 21 340 979

E / info@persona.com.mt
www.persona.com.mt

42, Marina Court, Sir Ugo Mifsud Street,
c/w G. Cali Street, Ta' Xbiex, TBX 1437, Malta



PERSONA
MED-AESTHETIC CENTRE



SmoothShapes®

Bringing science to the treatment of cellulite

A breakthrough integrated laser, light and massage treatment.

PERSONA
MED-AESTHETIC CENTRE

Stop blaming yourself, it is not your fault. Unfortunately, no amount of diet or exercise can prevent or reduce cellulite.

Now, with SmoothShapes® at Persona, cellulite and circumference of treated areas can be reduced through a new program of combined light, laser, and massage therapies. Painlessly, safely and effectively. SmoothShapes® is the top choice in cellulite reduction, fostering the natural processes that not only give you a dramatically smoother, firmer look, but encourages stronger skin and a healthier, more confident you.



What is Cellulite?

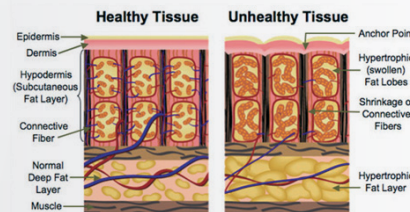
Cellulite is a skin condition that appears when fat cells in the skin enlarge and swell and the once flexible collagen bands become brittle and no longer stretch properly. This causes the dimpled skin characteristic of cellulite. Over 85% of post-adolescent women will develop cellulite at some time during their life although it is hardly ever seen in men. The development of cellulite is primarily hereditary and caused by hormones, vascular changes and inflammation.

What is SmoothShapes®?

SmoothShapes® is a safe and painless treatment which reduces the dimpled skin, characteristic of cellulite, while also providing circumferential reduction. Recently approved in the USA by the FDA (Food and Drug Administration) for the treatment of cellulite, it targets collagen so skin is smoother and tighter. It also shrinks fat cells thereby decreasing volume. Metabolic processes are gently stimulated, minimising the underlying causes of cellulite, such as fluid retention and impaired blood circulation.

How does it work?

Unlike typical cellulite treatments, SmoothShapes® unique technology combines a variety of noninvasive approaches to treat cellulite directly, at multiple levels. SmoothShapes® uses a breakthrough proprietary technology called Photomology® to combat cellulite. This is accomplished using dynamic laser and light energy to liquefy fat in the enlarged cells and repair brittle collagen. Unlike most other devices, SmoothShapes® combines two different laser energy wavelengths. One helps liquefy the fat and move it out of the cell, while the other makes the fat cell membrane permeable. Contoured rollers and vacuum massage assist in moving the liquefied fat out through the lymphatic system, and in smoothing the appearance of the skin. SmoothShapes® also provides the added benefit of BodySlimming, which circumferentially reduces treated areas. These four distinct modalities offer a unique combination for better and more long-lasting results.



Which areas of the body can be treated?

SmoothShapes® is ideal for treating thighs, buttocks, hips, abdomen, waist, and back.

What precautions should I take before the treatment?

Before each appointment it is recommended to remove all body oil, lotions and tanning products. You should remove all body hair in the treated areas and use a body scrub.

What results should I expect?

At the end of your treatment program, you can expect a significant improvement in the texture and smoothness of your skin and a reduction in the dimpled appearance of cellulite. Skin feels tighter and clothes fit better since circumference is reduced. You will see additional continued improvement for 3 to 6 months after your last treatment.

Is it painful?

Not at all. The procedure is comparable to an intensive massage.

How many treatments will I require?

A complete SmoothShapes® program typically consists of eight sessions spread out twice a week for four weeks.

Are results Permanent?

SmoothShapes® gives results that last longer than many other devices and treatments. A follow-up consultation is recommended six months after completing the treatment program. To maintain results, most individuals will need to return for a shorter program of follow-up treatments once or twice a year.

